


Date Monday 31 th of August 2020

Objetivo general de la Clase:
comparatives and superlatives
Reading -Vocabulary

Comparative/Superlative Adjectives in Spanish Grammar

Comparative and superlative adjectives allow us to compare the qualities expressed by adjectives. In Spanish grammar, comparative adjectives express more or less of a quality, and superlative adjectives express a superior quality. Learn about the different types of comparative and superlatives in Spanish grammar with Lingolia's simple overview then put your knowledge to the test in the free exercises.





Write the comparative:



➤ a. old older

➤ b. strong

➤ c. happy

➤ d. modern

➤ e. important


f. good

g. large

h. serious

i. pretty

j. bad



Complete the sentences with the correct form of the adjective in brackets:

- ▶ a. Carol is as good (good) as you at sport.
- ▶ b. We like wearing the (late) fashion.
- ▶ c. These trousers are _____ (comfortable) than those jeans.
- ▶ d. She is _____ (happy) now than he was last year.
- ▶ e. You are the _____ (pretty) girl in class.
- ▶ f. My grandma is _____ (old) than my grandpa.
- ▶ g. The red dress is the _____ (attractive) in the shop.
- ▶ h. I always tell the _____ (fun) jokes.
- ▶ i. Your hair is _____ (curly) than my hair.
- ▶ j. My hair is _____ (short) than yours.

Text Book open page :96 no report.

Focusing on reading

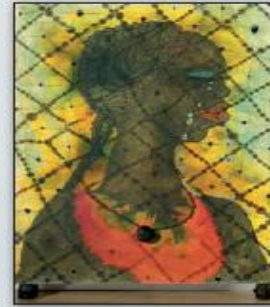
Inspiring artists

I.

For many years, the famous artist Chris Ofili has used elephant **dung** in his paintings as a symbol of his African heritage.

One of his best-known works is his *No Woman No Cry*, the title of one of Bob Marley's songs.

The painting is a tribute to the family of Stephen Lawrence, a London teenager who was murdered by a racist gang. The boy's face can be seen in each of the crying woman's tears. The painting stands on two dried, varnished lumps of elephant dung. A third is used as the pendant of the necklace.



II.

English artist Rachel Whiteread creates elegant and poetic sculptures which typically take the form of **casts**. Since the late 1980's, she has created unusual sculptures of everyday domestic items. One of her most famous sculptures was *House*- a concrete cast of the inside of a town house.

Rachel Whiteread has also used materials like plaster, rubber, and **styrofoam** to define the space around or inside objects and buildings.

